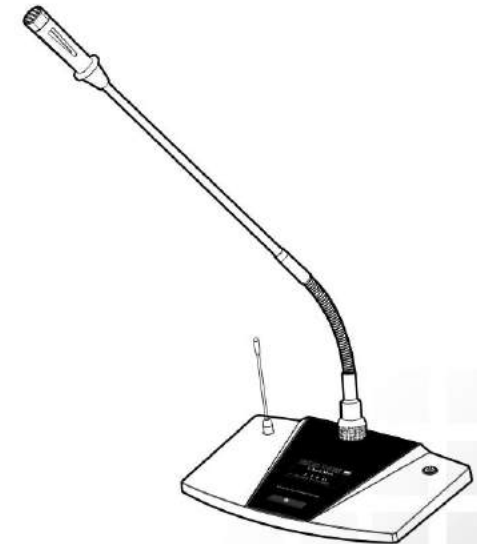


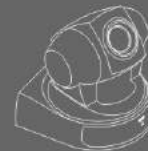
DIGITAL WIRELESS VIDEO CONFERENCE SYSTEM

BKR[®]

Operation Instructions



This operation manual would be revised at any time without prior notice.
This manual contains needed information as much as possible. If there is anything unclear, wrong or omitted, please don't hesitate to contact us for confirmation. The company is free from all the damage and loss caused by no confirmation.
For testing and maintenance, please contact us or our authorized distributors through the dealer from whom you purchased this product. The company assumes no responsibility for any loss or damage resulting from testing and maintaining this unit by unqualified personnel.



This instruction manual includes several types of microphone system.
Read the relevant chapters according to the type before usage. Keep it for future reference.

Foreword

Thank you very much for choosing our company's digital wireless conference system. In order to make full use of the product, we highly suggest you read the instruction manual before usage.

This product adopts the wireless digital technology to process the audio signal and control signal. With scientific ID code design and no complicated cables, it can be used once the power supply is turned on.

Within the signal coverage range, the units can be freely moved and

unlimited number of units can be supported. It also has the function of interference signal automatic reconnaissance.

When it finds an interference signal, it can assign other frequency to work which can avoid the interference signal. In the effective range, one control unit can support 255 units use totally.



Content

1.Features	1
1.1 Features of Chairman unit	1
1.1 Features of Chairman unit	1
2.Safety instructions.....	2
3.Instruction for chairman unit	3
3.1Brief instruction	3
3.2Operation and function description	3
3.3Graphic operation	3
3.4 Charge battery graphic	3
4.Instruction for representative unit	4
4.1Brief instruction	4
4.2Operation and function description	4
4.3Graphic operation	4
4.4Charge battery graphic	4
5. Product parameters	5
5.1 Chairman unit parameters	5
5.2 Representative unit parameters	5
6.Solutions to breakdowns	6
7.Graphic of connection instruction	7

1.Features

1.1 Features of Chairman unit

- 1) Using a new digital control design.
- 2) Condenser pick-up, provides the top definition and directivity.
- 3) LCD screen indicate working mode, working condition and low voltage indicated.
- 4) Microphone head have shining lamp ring, press the switch, if the light ring shine means microphone can be use normally.
- 5) Built-in 3.7V lithium battery, national USB socket, convenient and suitable for charge battery.
- 6) Can continue to speak above 15 hours because of the low power design.
- 7) Delegate unit and Chairman unit support 1-6 people to speech at the same time.
- 8) Chairman unit will not be controlled with speaker limited mode and FIFO mode .Only the chairman unit can be used in the chairman specially mode.
- 9) Chairman unit has a priority button which can control delegate speaking status .
- 10) Chairman units can not be cut off or controlled by each other.

1.2 Features of representative unit

- 1) Using a new digital control design.
- 2) Condenser pick-up, provides the top definition and directivity.
- 3) LCD screen indicate working mode, working condition and low voltage indicated.
- 4) Microphone head have shining lamp ring, press the switch, if the light ring shine means microphone can be use normally.
- 5) Built-in 3.7V lithium battery, national USB socket, convenient and suitable for charge battery.
- 6) Can continue to speak above 15 hours because of the low power design.
- 7) Delegate unit and Chairman unit support 1-6 people to speech at the same time.

2.Safety instructions

- Read this instruction manual.
- Keep this instruction manual for future reference.
- Follow all instructions in this instruction manual.
- Do not place the product near any heat sources such as radiators, stoves, or other devices that product heat. If you are not going to use the product for a long time, pull out the battery. Do not throw or drop the product in case it causes severe damages.
- Be aware of the supply voltage. Only the supply voltage listed on the instruction manual fits the product.
- Only use accessories specified by our company.
- Never take apart the device. If devices are took apart by customers in breach of this instruction, the warranty becomes null and void. Turn to the professional mechanic or local dealer for help if there is something wrong with the product.
- If components are needed to be replaced, replace them with original components produced by our company.
- Leave the devices the minimum space of 20 mm for proper ventilation. Do not cover the vent with newspapers, cloths, curtains, etc.

Do not place the devices near fire or water.

Only professional mechanic can assemble the devices if it is labeled with hazard warning sign “⚡” .

Recycle the replaced battery.

The devices can be used in tropical or temperate regions.

Only for safe use in the area with an altitude of below 2,000 meters.



※ If the device is not going to be used, turn it off and put out of the battery for protect the equipment.

3. Instruction for chairman unit

3.1 Brief instruction

1. High fidelity microphone head, condenser pickup, provides the top definition and directivity, light ring display working condition.
2. LCD screen display working condition.
3. Equipped with prior-button to control representative unit speaking, press the button can be mandatory to cut off the representative to speech.
4. Built-in 3.7V lithium, design national USB socket.

3.2 Operation and function description

1. Connect the USB charge interface and the power to charge up the battery.
2. Touch the power switch for 1 second, LCD screen and light ring put on means the unit is on working.
3. LCD screen show the working condition.
4. Put off the unit when long press the power button 0.5 seconds.

3.3 Graphic operation

1. LCD screen graphic
2. Installation graphic of Chairman unit



3.4 Charge battery graphic



CAUTION: PLEASE CHARGE UP THE BATTERY PER 3 MONTHS IF DO NOT USE FOR A LONG TIME. USE THE SAME TYPE BATTERY IF YOU WANT TO CHANGE THE BATTERY. IF NOT, IT WILL BE DANGEROUS.

4. Instruction for representative unit

4.1 Brief instruction

1. High fidelity microphone head, condenser pickup, provides the top definition and directivity, light ring display working condition.
2. LCD screen display working condition.
3. Built-in 3.7V lithium, design national USB socket.

4.2 Operation and function description

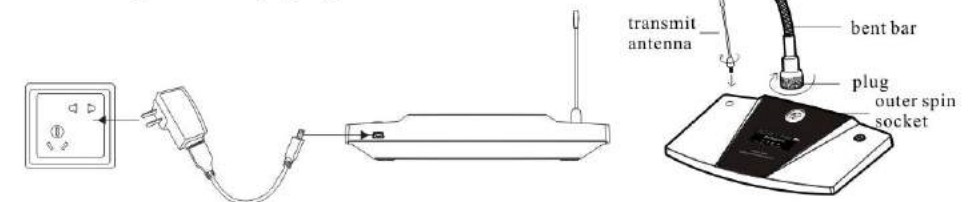
1. Connect the USB charge interface and the power to charge up the battery.
2. Touch the power switch for 1 second, LCD screen and light ring put on means the unit is on working.
3. LCD screen show the working condition.
4. Put off the unit when long press the power button 0.5 seconds.

4.3 Graphic operation

1. LCD screen graphic
2. Installation graphic of Representative unit



4.4 Charge battery graphic



CAUTION: PLEASE CHARGE UP THE BATTERY PER 3 MONTHS IF DO NOT USE FOR A LONG TIME. USE THE SAME TYPE BATTERY IF YOU WANT TO CHANGE THE BATTERY. IF NOT, IT WILL BE DANGEROUS.

5. Product parameters

5.1 Chairman unit parameters

Power supply : Built-in 3.7V lithium battery
 Emission power : 10mW
 Maximum frequency deviation : $\pm 45\text{KHz}$
 Pickup head : condenser, single direction
 Sensitivity : $-43 \pm 3\text{dB}@1\text{KHz}$
 Frequency response : 20Hz~18KHz
 Power consumption : 130mA

5.2 Delegate unit parameters

Power supply : Built-in 3.7V lithium battery
 Emission power : 10mW
 Maximum frequency deviation : $\pm 45\text{KHz}$
 Pickup head : condenser, single direction
 Sensitivity : $-43 \pm 3\text{dB}@1\text{KHz}$
 Frequency response : 20Hz~18KHz
 Power consumption : 130mA

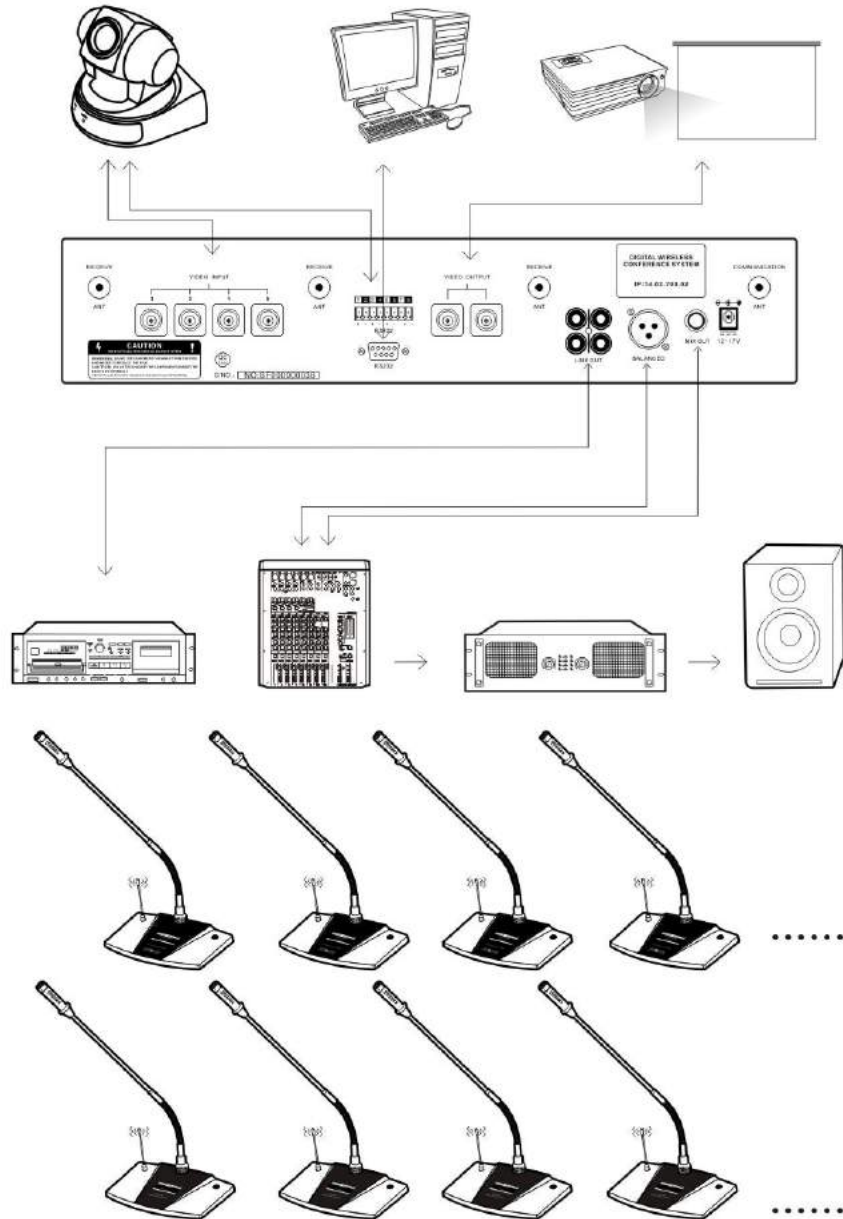
6. Solutions to breakdowns

Breakdowns	Causes	Solutions
Unit appear "stand by"	The host did not put on	Put on the host
	Communication IP and ID unmatched	Set up and pair the IP and ID again
Unit appear "power off"	Low battery voltage	Charge up the battery quickly
Delegate appear "A-steal"	Use "FIFO" mode be put out for other unit	Restart unit
Delegate appear "C-steal"	Chairman unit use prior right	Restart unit
Unit appear "ban say"	Use Chairman unit special mode	Change other mode
	Enough speech people in the limit mode	Restart after the unit out
Unit appear "Mast Rest"	Put off the host	Put on the host
	Preserve the new date after set up	Restart the unit
On the off sound	Out of the effective distance	Keep in the effective distance
Host and unit function can not be operated	Out of the effective distance	Keep in the effective distance
Put on the unit normally but there is no sound put out	Mic plug didn't assemble tight	Assemble the mic plug again
	Built-in volume to minimum	Turn the built-in volume up
Camera can't tracking the unit after the unit is turned on	Camera power haven't turned on	Turn on the camera
	Preset point haven't set	Set present point of all units
	Wrong connect of the control cable	Reconnect the control cable

Care and maintenance

Before fixing or cleaning the device, cut off the electricity supply. Clean it with soft cloth. For spots, clean it with cloth that has neutral cleaning solvent and dry it with another cloth. Do not use gasoline, diluents or any other chemical product, or else the surface will be damaged.

7. Connection instruction



Attention:
1 meter above floor At least 1 metre to wall Antenna vertical to the host